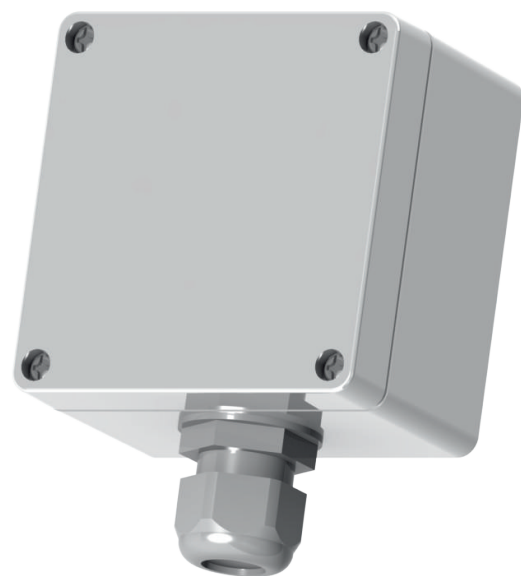


KONA Industrial Transceiver and Sensor

LoRaWAN™ Battery-Powered Radio Transmitter

The KONA Industrial Transceiver and Sensor is an ideal solution for interfacing automation and control instrumentation to LoRaWAN™ networks. The Industrial Transceiver and Sensor supports up to 3 Analog and Digital inputs enabling remote capture of data, 2 Switched Outputs to activate actuators and different control system components and a configurable RS-232, RS-422 or RS-485 interface with numerous protocols. It also measures and reports temperature, humidity, motion, shock or other custom features.

The Industrial Transceiver and Sensor utilizes a ruggedized IP-67 polycarbonate enclosure. It allows easy access to terminate the control interface at the point of use. An integrated Li-SOCl2 battery has 10 year lifetime. The Industrial Transceiver and Sensor supports battery status for easy maintenance.



Applications

Industrial Process Automation

Precision Agriculture

Smart Building Control

Manufacturing

Smart Meters and Energy Grids

Automotive

M2M LoRaWAN Retrofit

I/O and Interfaces

Input 1 60VDC binary

Input 2 4-20 mA current loop

Input 3 0-10V analog

Output 1 60VDC

Output 2 200VAC

Serial Interface RS-232 / 422 / 485

General System Parameters

Operational Temperature	-40°C to +55°C
Operational Voltage	3.6V Nominal
Ingress Protection	IP67
Size	90 x 90 x 60 mm
Weight	50 g
Battery (up to 10 years)	Li-SOCl2

LoRa Parameters

RF Power	20 dBm (100mW)
RF Sensitivity	up to -140dBm
ISM Band	NA915, EU868, AS923, JP920, CH779
Antenna	Internal, Internal Patch & SMA (option)
LoRa Device Class	Class A, B or C (optional DC power)

Regulatory Compliance

Safety	UL 60950-1 (US/C), IEC 60950-1 (CE)
Environmental	ETSI EN 300 019-2-1, 300 019-2-2 ETSI EN 300 019-2-3, 300 019-2-4
Regulatory	FCC 15.247 RSS-247 FCC 15.209 RSS-Gen

Specifications subject to change without notice.

TEKTELIC Communications is a premier supplier of best-in-class LoRaWAN™ IoT Gateways, Sensors, and custom applications. These elements combined provide a powerful end-to-end solution that can be easily, quickly, and cost effectively deployed to address the most demanding IoT challenges.

For more information please visit www.tektelic.com

TEKTELIC
communications
LoRa Alliance Member™