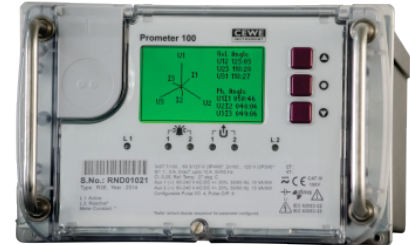


Prometer 100

precision metering series

in-built IEC 61850 support

Prometer 100 is a series of next generation energy meters designed for power transfer points requiring precise measurements and revenue transactions. Multiple communication options ensure easy integration with AMR/AMI/SCADA systems and upgrade to future sub-station automation systems. Four-quadrant energy measurement allows monitoring of generation, transmission and bulk power transfer points.



Applications

- Energy transfer measurement and reconciliation
- Power plants, feeder monitoring, grid substations, wind turbines
- On-line monitoring of energy exchange at various interface points
- Energy accounting, automation and system integration

Benefits

- Minimal integration cost through multiple communication interfaces
- Suitable for diverse applications through wide-range voltage, current and auxiliary supply inputs
- Support of industry standard DLMS and MODBUS meter reading protocols
- Meter reading and display viewing under power outage
- Multi-lingual support on display (Swedish, German, English, French, Spanish and Italian)

Features

- 0.2s accuracy for active and reactive measurement
- Wide-range dual auxiliary supply with options for AC/DC and self-power (VT powered)
- Power quality features including THD, sag, swell, voltage unbalance and interruption recording
- Dynamic error compensation for CT/VT
- Transformer/line loss adjustment (copper and iron losses)
- Intuitive graphical display including vector diagram, wave forms and bar chart for consumption
- Remote configuration of communication ports
- Simultaneous DLMS and MODBUS over Ethernet port
- Supports meter reading and display using field replaceable battery
- In built IEC61850/RS232 port along with RS485 and Ethernet ports in a single product, with simultaneous communication capability
- Dual loggers for energy and instantaneous parameters
- Flexible time-of-day tariff, maximum demand, DST (Daylight saving time) support, with automatic billing dates

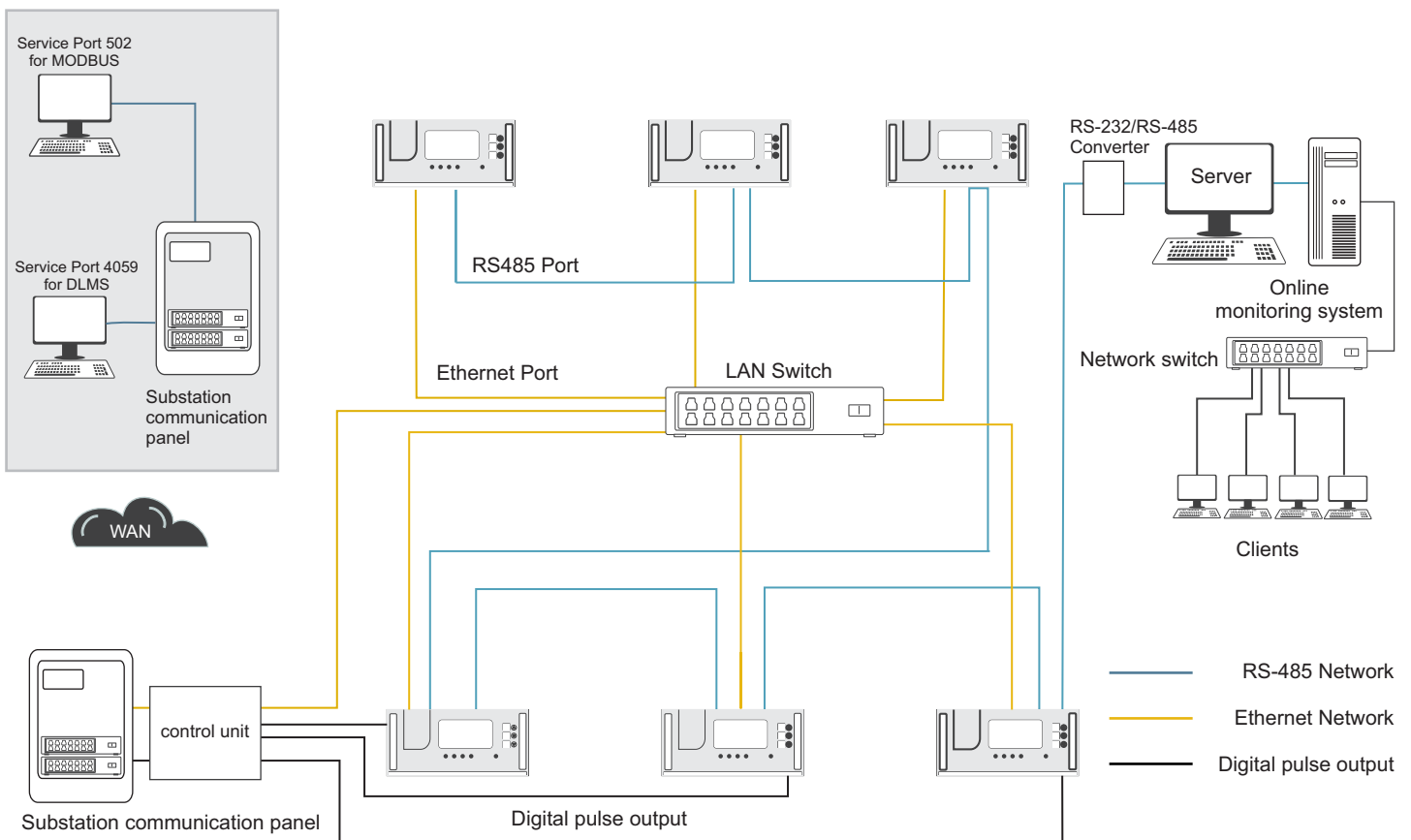
Prometer 100

precision metering series

System architecture

Prometer 100 offers various communication modules, such as RS-232 with output to power up terminal modem, RS-485 for multi-drop connectivity and Ethernet for integrating into communication bus. The communication modules can be hot-plugged in field and locally or remotely configured for ids and IP addresses. Dual-socket support on Ethernet allows for simultaneous communication over MODBUS and DLMS through different clients. All communication ports can simultaneously transfer data at high speeds.

RS-485 and Ethernet port scheme station



Product options*

| Power supply 1 | Power supply 2 | Pulse input / output |
|-------------------------------|-------------------------------|--|
| 60-240 V AC/DC ($\pm 20\%$) | 60-240 V AC/DC ($\pm 20\%$) | 4 configurable I/O |
| Self-powered | 24-48 V DC ($\pm 20\%$) | 4 configurable I/O and 8 fixed pulse O/P |

Prometer 100

precision metering series

Technical specifications

Electrical

| | |
|---|--|
| Connection type | HV3/HV4 |
| Measurement voltage range | 57.7 V to 69.3 V (L-N), 100V to 120 V (L-L) $\pm 30\%$ |
| Measurement current range | 1-10 A (configurable) |
| Frequency | 50/60 Hz $\pm 5\%$ |
| Burden with auxiliary / self-powered (VT) | Current circuit: < 0.1 VA/phase @ 1 A < 0.5 VA/phase @ 5 A Voltage circuit in case of Aux power: < 0.1 VA/phase Voltage circuit in case of internal/self power: < 6 VA/phase |
| Accuracy | Class 0.2s or class 0.5s |
| Maximum overload voltage | 1.5 times of nominal voltage continuously 2 times of nominal voltage for 0.5 second |
| Maximum overload current | 1.5 times of I _{max} continuously 10 times I _{max} for 1 second 20 times I _{max} for 0.5 second |

Compliance

| | |
|-----------|--|
| Standards | IEC 62052-11, IEC 62053-22, IEC 62053-23, IEC 62053-24, IEC 62056-52, IEC 61010-1, IEC 61010-2-030, CE |
|-----------|--|

Environmental

| | |
|--------------------------|--------------------------|
| Operating temperature | -10 °C to +60 °C |
| Limit range of operation | -25 °C to +70 °C |
| Storage temperature | -40 °C to +80 °C |
| Temperature coefficient | <0.3%/10°C for class 0.5 |
| Temperature coefficient | <0.1%/10°C for class 0.2 |

Software

| |
|--|
| Two data loggers: |
| <ul style="list-style-type: none">• Maximum 50 parameters configurable in each logger• Logging of up to 22 energy channels, with integration period 5 to 60 minutes• 80+ parameters available for logging of instantaneous values with integration period 1 to 60 minutes• ~9600 Parameter-days capacity at 30 minute interval in each logger |
| Configurable parameters: |
| <ul style="list-style-type: none">• 16 time-of-use tariffs, 16 seasons, 16 days types and 16 time zones, 53 billing dates, DST dates for 25 years• Logging of up to 100 day for daily energy snapshots• 7 configurable display sequences along with fixed, auto and sealed button sequences• 50+ alarms and 10+compartments for event logging |
| Logging of up to 15 sets of historical data logging |
| Up to 31 st individual harmonic component measurement |
| Power quality features, including voltage sag, swell, unbalance recording |
| Delta values monitored and logged |
| Code of Practice (UK BSCP) security protection |



Technical specifications

Features

| | |
|--------------|--|
| Power supply | Dual/single auxiliary supply Range: 60-240 V AC/DC ($\pm 20\%$), burden: <10 VA Optional range: 24-48 V DC ($\pm 20\%$), burden: <10 VA |
| Display | Graphical, with green backlight Extended temperature range -20 °C to +70 °C Size: 69 x 39 mm (W x H), 128 x 80 pixels, pixel size: 0.5 mm ² Max display character size 10 x 5 mm (H x W) |
| Battery | Field-replaceable battery for RTC backup and meter reading/display viewing during power outage |

Inputs and Outputs

| | |
|------------------------------------|---|
| | 8 fixed pulse outputs 4 configurable as pulse inputs/outputs |
| Pulse outputs | Type: volt-free, 100 mA Voltage: 48-240 V AC/DC, option for 24-40 V DC, Pulse width: 20 - 300 ms (for 50Hz); 16 - 300 ms (for 60Hz) |
| Configurable as pulse input/output | Pulse output type: volt-free, 100mA Pulse input type: optical isolator Voltage: 24-240 V AC/DC |
| Indicator | Six LEDs: 2 for metrology, 2 for pulse outputs, 2 for alarms/events |

Communication

| | |
|-------------------------------------|--|
| Optical 1107 port | Protocol: DLMS, Baud rate: 1200 – 19200 bps, Half duplex |
| RS232 port | Built-in supply of 4 V @ 550 mA, Protocol: DLMS, Baud rate: 1200 – 57600 bps, Half duplex |
| RS485 port | Protocol: Configurable DLMS/MODBUS RTU, Baud rate: 1200 – 57600 bps, Half duplex |
| Ethernet port | 10/100 Mbps, Protocol: DLMS and MODBUS TCP simultaneous client Full duplex |
| Inbuilt IEC61850 server edition 2.0 | Logical nodes: LLNO, LPHD, MMXU, MMTR, MHAI, MABT Reports (RCB) Up to 5 clients Time synchronization – SNTP |
| Connector type | Standard RJ45 for all the ports except optical |

Accessories (optional)

11" rack, 19" rack, software

* Electrical, compliance, mechanical, software and features options depend on variant selected.